

# ELEMENT

HOME BUILDERS



## AVAILABLE PLAN: CLEMENTINE

Base: 3,596 SF Livable, 5,911 Total SF, 5 Beds, 5 Baths, Powder Room, Loft/Office, 2 Car Garage  
Options: Fireplaces, Pool, Spa, Summer Kitchen, Golf Cart Garage, 3 Car Garage,  
Garage Apartment Suite, Cabana

Home plans and design renderings are subject to modifications.

Elevation costs vary based on exterior finishes and roof material.



THE GROVE AT THE HARVEST DISTRICT | [ELEMENTATGROVE.COM](https://elementatgrove.com)  
Sales Executive: Carolina Dumit | 407.325.8963 | [carolina@ehbfl.com](mailto:carolina@ehbfl.com)



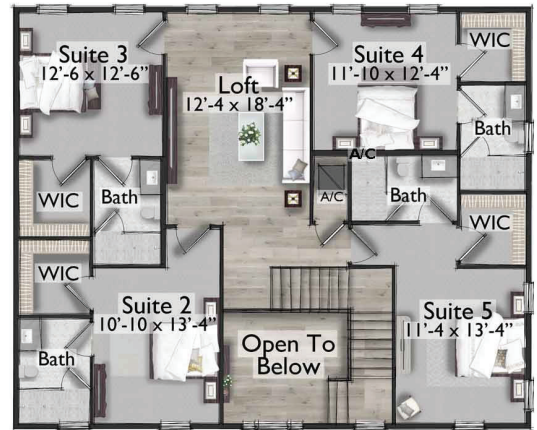
# ELEMENT

HOME BUILDERS

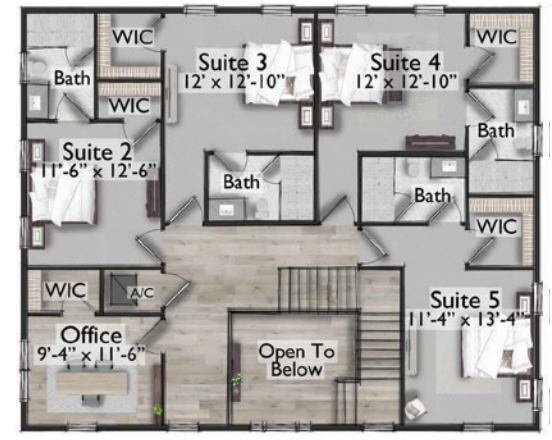
STANDARD FIRST FLOOR



STANDARD SECOND FLOOR 1



STANDARD SECOND FLOOR 2



# ELEMENT

HOME BUILDERS

GARAGE APARTMENT SUITE- AVAILABLE FOR 2 CAR AND 3 CAR GARAGE OPTIONS



1ST FLOOR



2ND FLOOR

3 CAR GARAGE



GOLF CART GARAGE



CABANA



## ADDITIONAL HOME PLAN OPTIONS

Costs and availability of these options vary based on the lot fit and home plan.